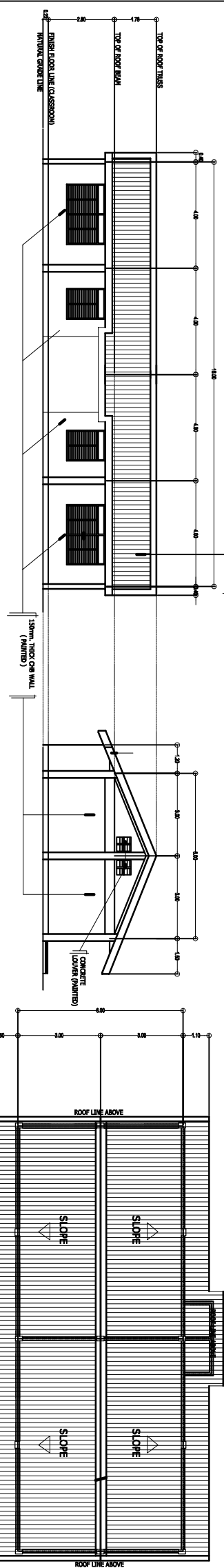


FRONT ELEVATION
SCALE 1:100 N.

RIGHT SIDE ELEVATION
SCALE 1:100 N.

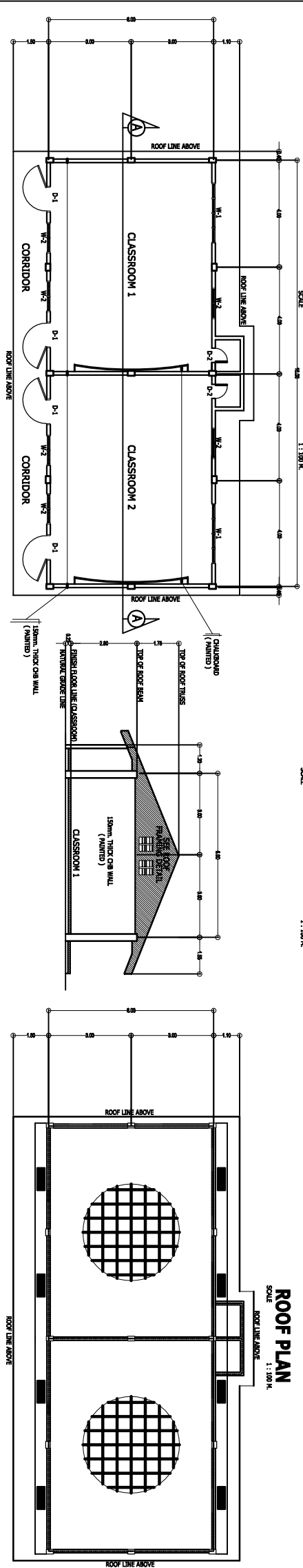
SECTION THRU " A - A "
SCALE 1:100 N.



REAR ELEVATION
SCALE 1:100 N.

LEFT SIDE ELEVATION
SCALE 1:100 N.

SECTION THRU " B - B "
SCALE 1:100 N.



FLOOR PLAN
SCALE 1:100 N.

SECTION THRU " B - B "
SCALE 1:100 N.

REFLECTED CEILING PLAN
SCALE 1:100 N.

<div><div>DEPED</div><div>DEPARTMENT OF EDUCATION</div><div>DIVISION OF MISAMIS ORIENTAL</div><div>A, Velez Street, Cagayan de Oro City</div></div>		<div>PROJECT TITLE:</div> <div>REPAINTING OF THE ONE STOREY TWO (2) CLASSROOMS MULTI-PURPOSE TYPE WITH ATTACHED CR</div>		<div>PREPARED BY:</div> <div>ENGR SANDY L. SIMO, CE</div>		<div>RECOMMENDING APPROVAL:</div> <div>RUDY O. MAGDUGO</div>		<div>APPROVED:</div> <div>CHERRY MAE L. LIMBACO, Ph.D., CESO V</div>		<div>SHEET CONTENTS :</div> <div>ROOF ELEVATION REAR ELEVATION FLOOR PLAN SECTION THRU " A - A " SECTION THRU " B - B " ROOF PLAN</div>		<div>SHEET NUMBER</div> <div>01 of 03</div>	
<div>OFFICE OF THE SCHOOLS DIVISION SUPERINTENDENT</div> <div>DEPED DIVISION OF MISAMIS ORIENTAL</div>													