



1
A-1

PERSPECTIVE


SCALE NTS

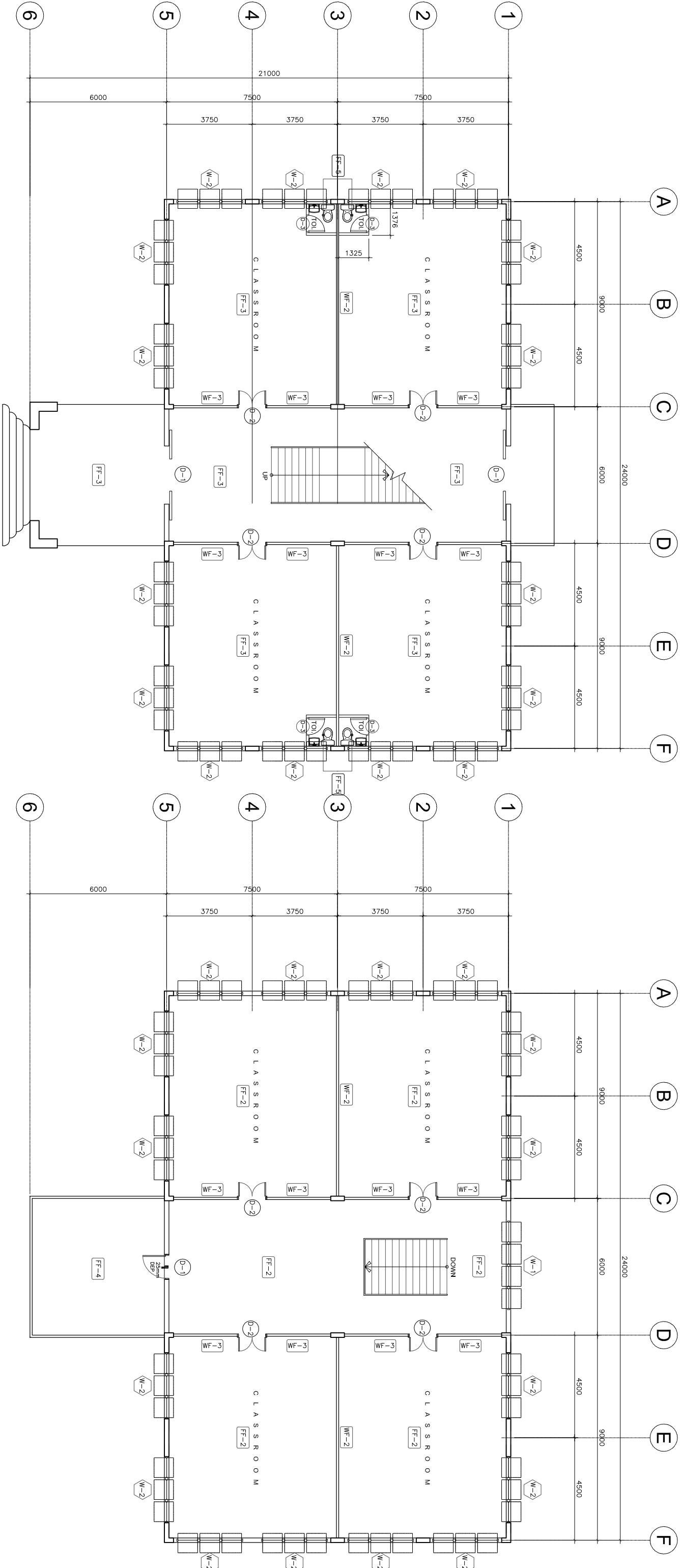


2
A-1

LOCATION MAP


SCALE NTS

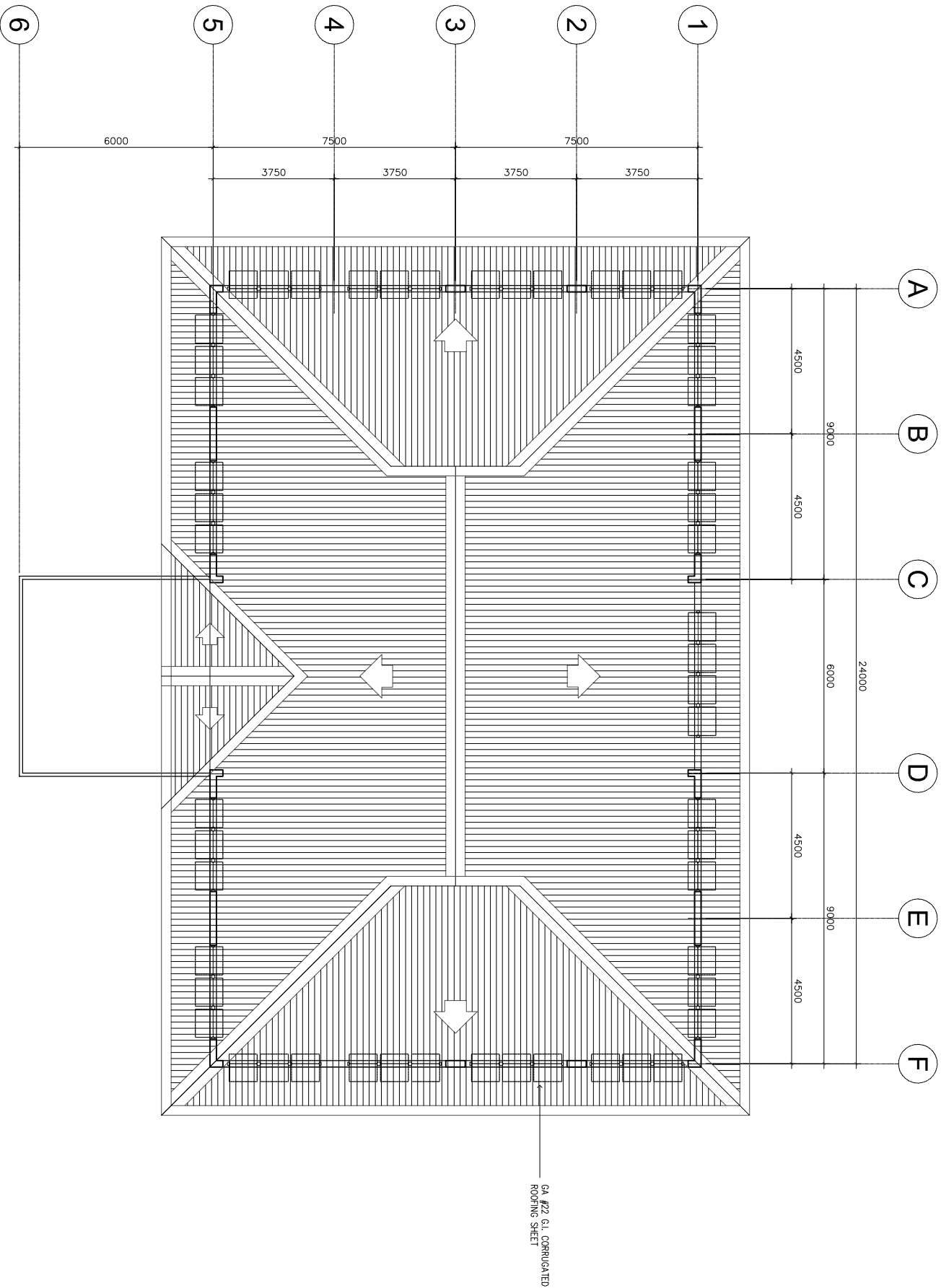
REPUBLIC OF THE PHILIPPINES		DRAWN BY :		CHECKED BY :		RECOMMENDING APPROVAL :		APPROVED BY :		PROJECT TITLE :		PROJECT CODE:		OWNER :		SHEET NO:	
<div><div></div><div>DepEd</div><div>DEPARTMENT OF EDUCATION EDUCATION FACILITIES DIVISION MIRALCO AVENUE, PASIG CITY</div></div>		JUNELSON P. CULLADO CAD OPERATOR ETD-DepEd		NATHANIEL Q. MENDOZA ARCHITECT IV ETD-DepEd		LUIS G. PURSIMA, JR. ASSISTANT CHIEF ETD-DepEd		ANNABELLE R. PANGAN CHIEF ETD-DepEd		MISAMIS ORIENTAL GENERAL COMPREHENSIVE HS DEPED GABALDON		GAB-2STY-8		DEPARTMENT OF EDUCATION DepEd		A-1 6	
										LOCATION : MISAMIS ORIENTAL				SHEET COMMENTS : TABLE OF CONTENTS PERSPECTIVE LOCATION MAP			




1 GROUND FLOOR PLAN
A-2 SCALE
1:100M

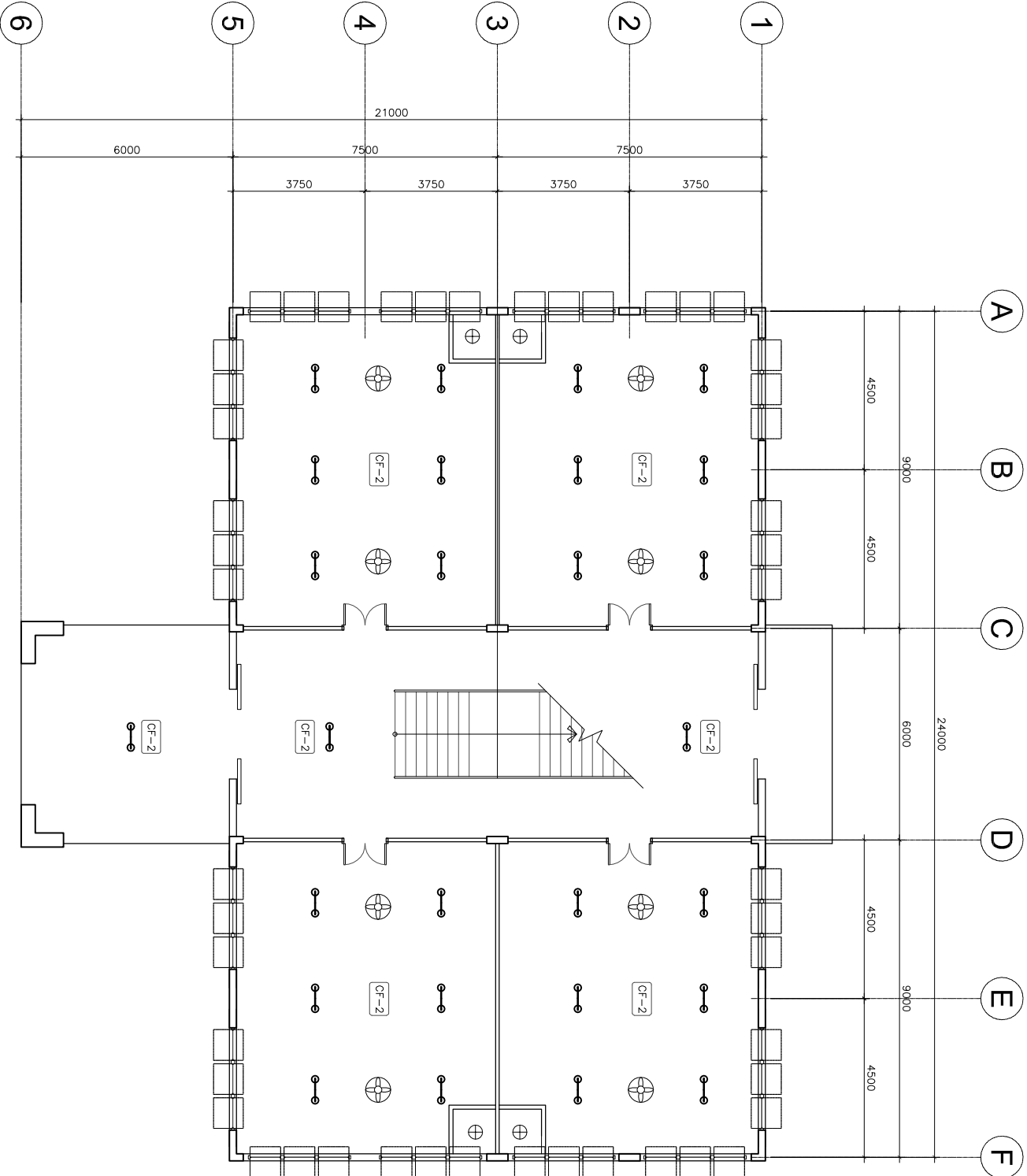
2 SECOND FLOOR PLAN
A-2 SCALE
1:100M

REPUBLIC OF THE PHILIPPINES		DRAWN BY :		CHECKED BY :		RECOMMENDING APPROVAL :		APPROVED BY :		PROJECT TITLE :		PROJECT CODE:		OWNER :		SHEET NO.:	
<div><div></div><div>DepEd</div><div>DEPARTMENT OF EDUCATION EDUCATION FACILITIES DIVISION MIRALDO AVENUE, PASIG CITY</div></div>		JUNELSON P. CULLADO CAD OPERATOR EPD-DepEd		NATHANIEL Q. MENDOZA ARCHITECT IV EPD-DepEd		LUIS G. PURISMA, JR. ASSISTANT CHIEF EPD-DepEd		ANNABELLE R. PANGAN CHIEF EPD-DepEd		DEPED MISAMIS ORIENTAL COMPREHENSIVE HS GABALDON		GAB-2STY-8		DEPARTMENT OF EDUCATION DepEd		FLOOR PLAN	
																A-2	
																6	

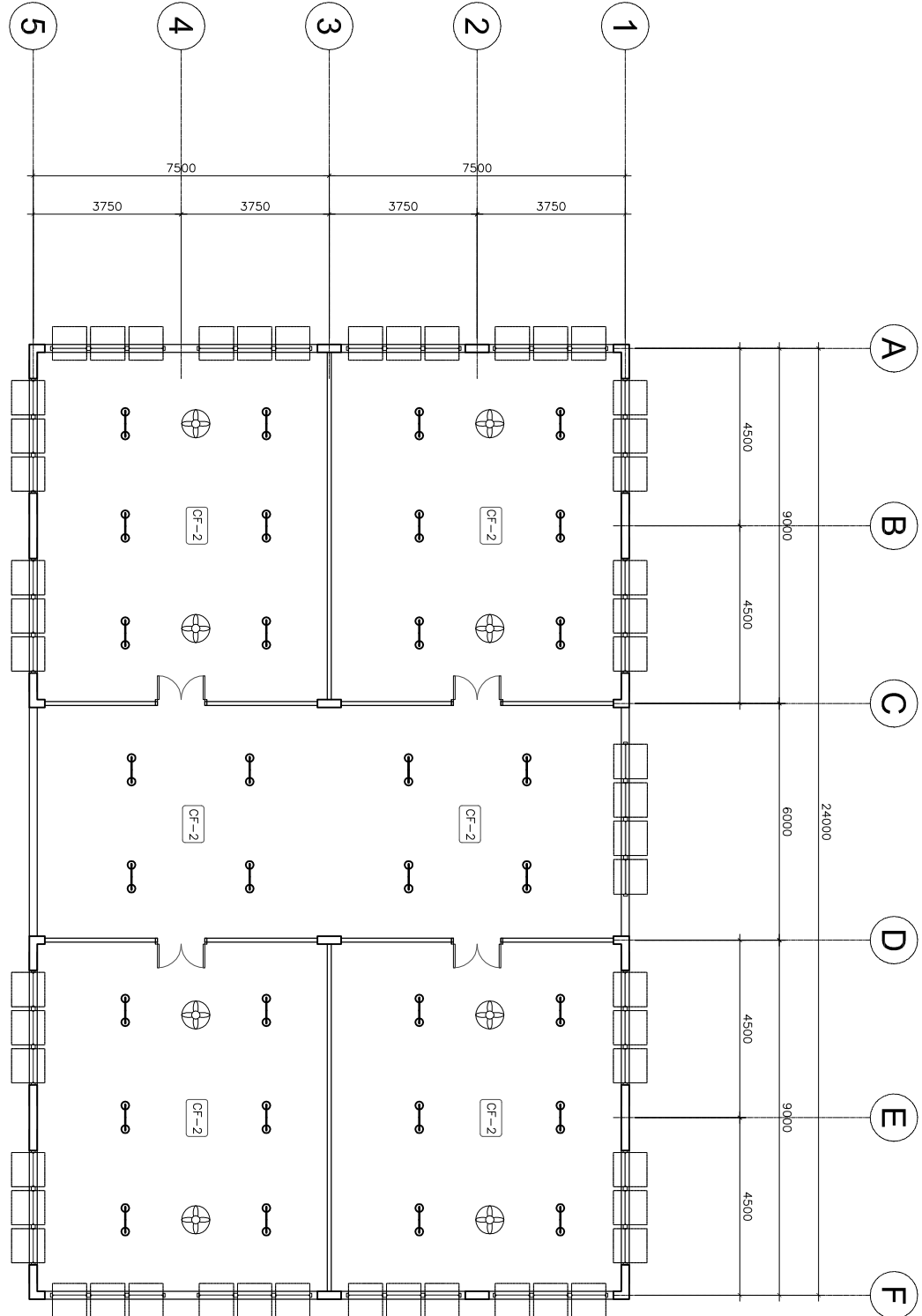


1 ROOF PLAN
A-3 SCALE 1:150M

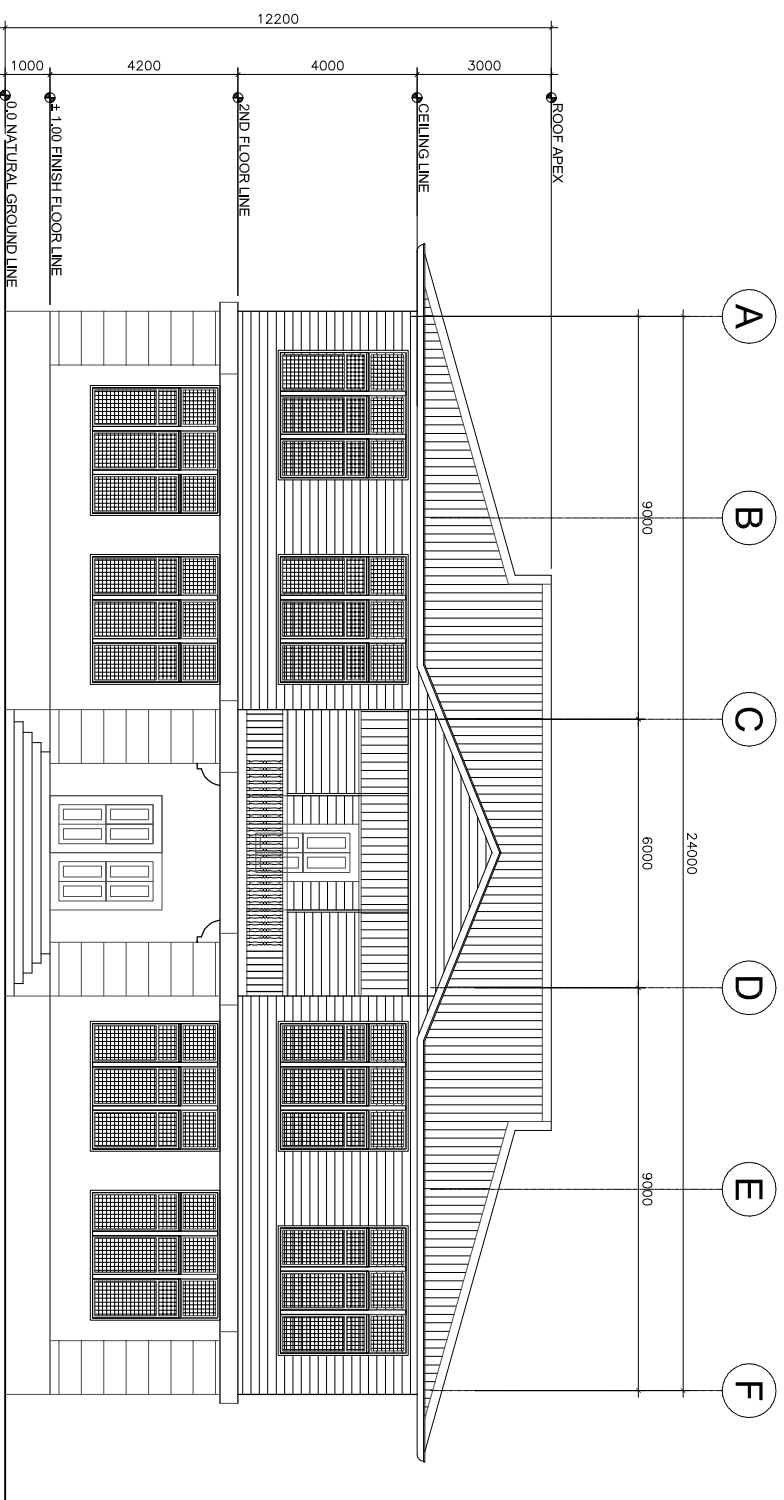
REPUBLIC OF THE PHILIPPINES		DRAWN BY :		CHECKED BY :		RECOMMENDING APPROVAL :		APPROVED BY :		PROJECT TITLE :		PROJECT CODE:		OWNER :		SHEET NO.:	
<div><div></div><div>DepEd DEPARTMENT OF EDUCATION EDUCATION FACILITIES DIVISION MIRALTO AVENUE, PASIG CITY</div></div>		JUNELSON P. CULLADO CAD. OPERATOR ETO-DepEd		NATHANIEL Q. MENDOZA ARCHITECT IV ETO-DepEd		LUIS G. PURISMA, JR. ASSISTANT CHIEF ETO-DepEd		ANNABELLE R. PANGAN CHIEF ETO-DepEd		MISAMIS ORIENTAL GENERAL COMPREHENSIVE HS DEPED GABALDON		GAB-2STY-8		DEPARTMENT OF EDUCATION DepEd		A-3	
										LOCATION : MISAMIS ORIENTAL				SHEET COMMENTS : ROOF PLAN		6	



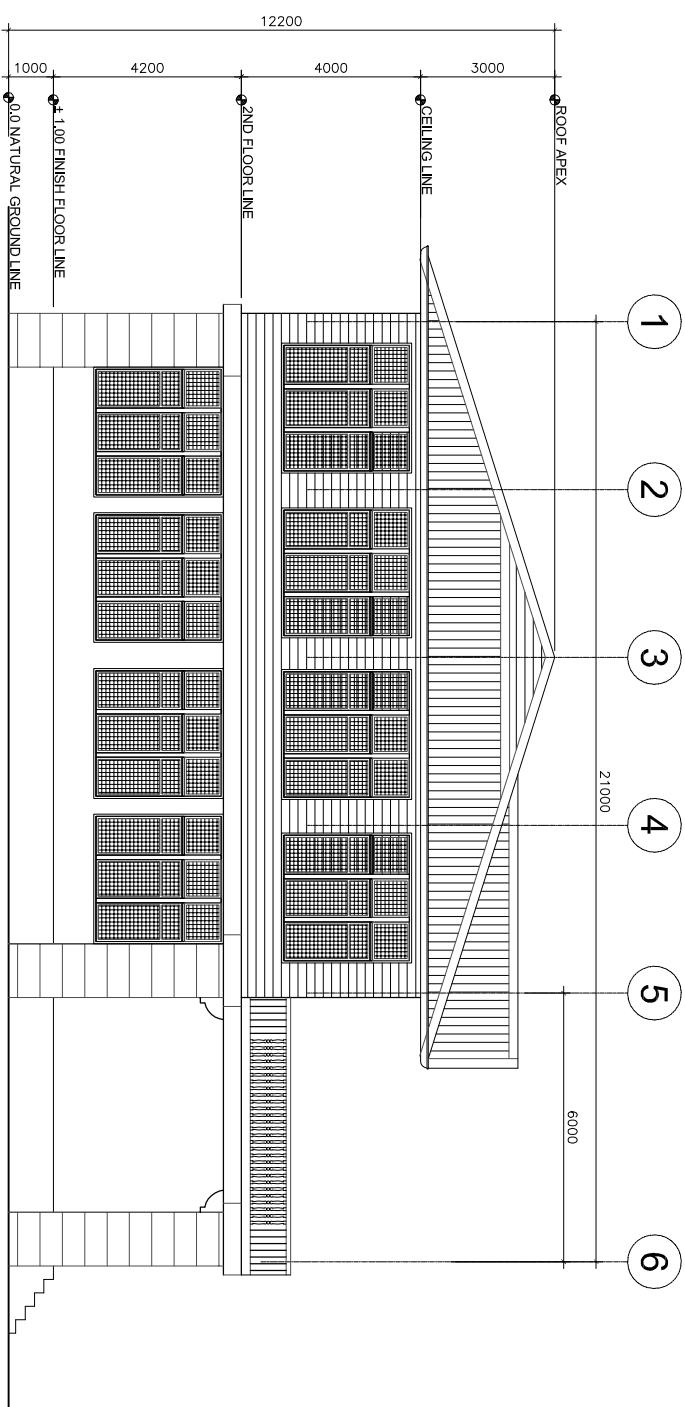
1 GROUND FLOOR REFLECTED PLAN
A-4 SCALE
1:100M



2 SECOND FLOOR REFLECTED PLAN
A-4 SCALE
1:100M

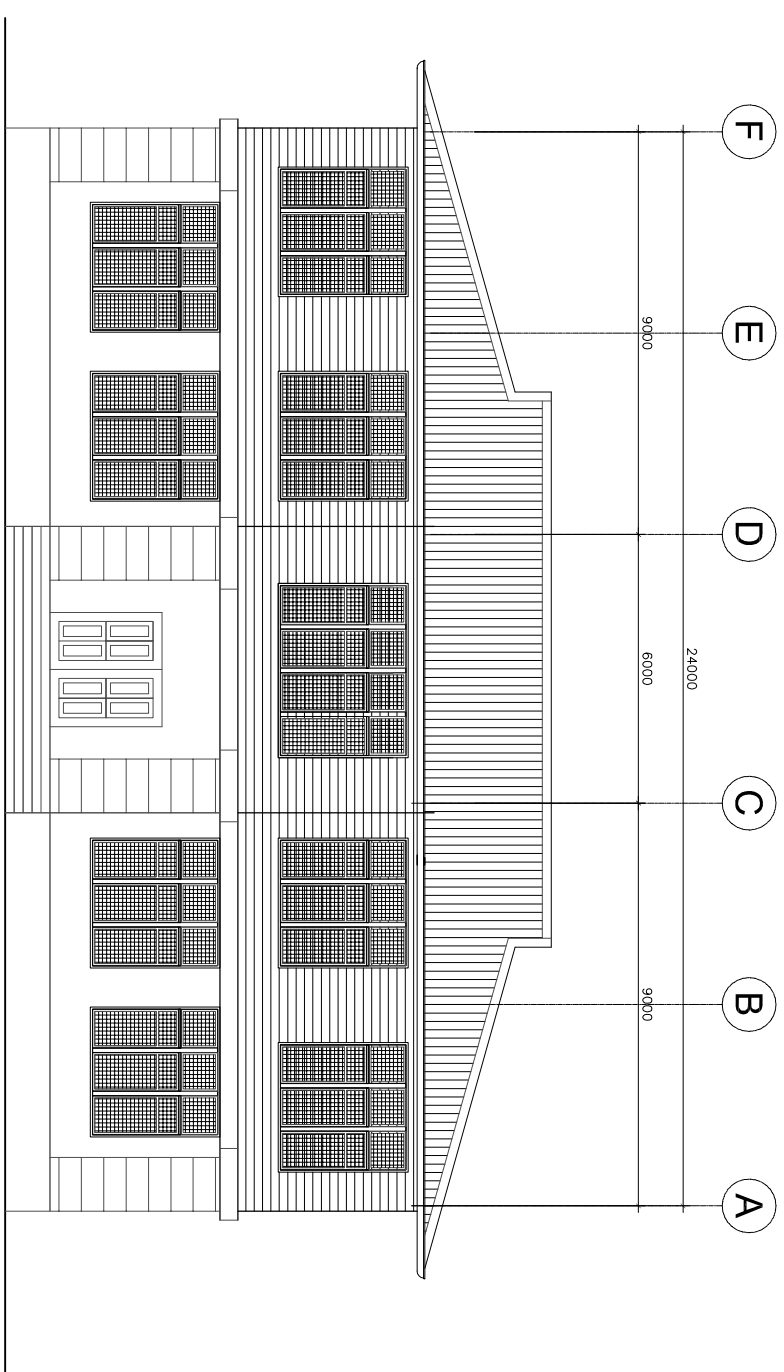


2	FRONT ELEVATION	1:100M
A-5		

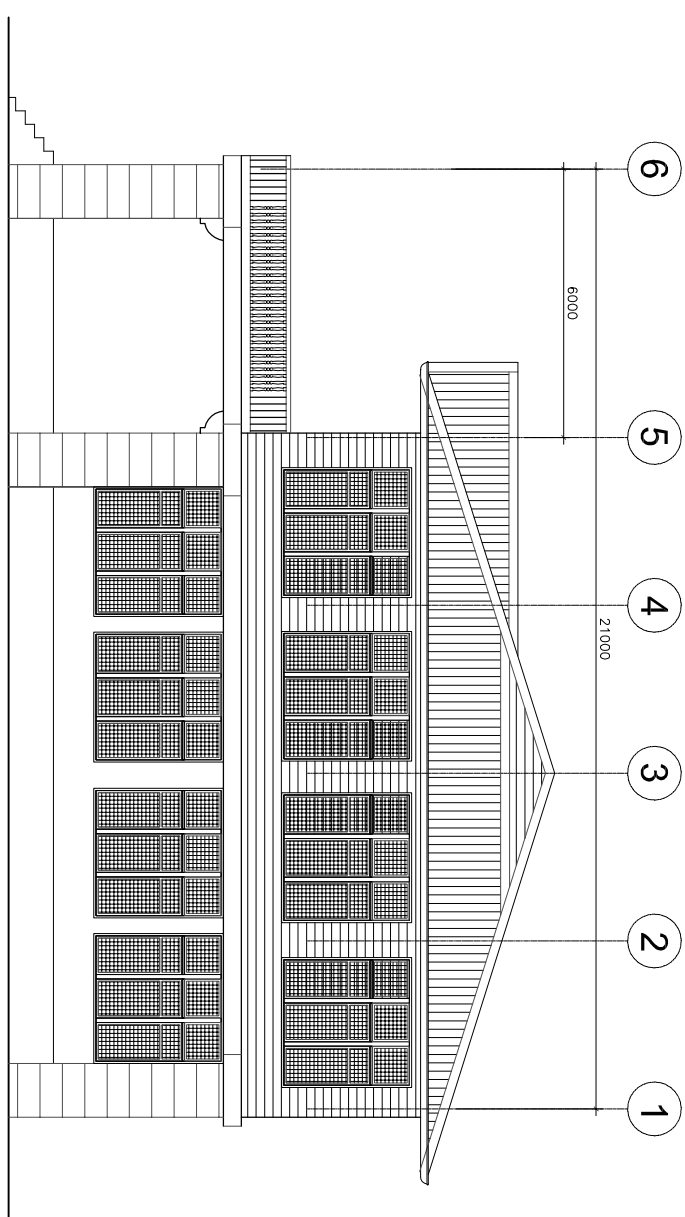


1 LEFT SIDE ELEVATION
A-5 SCALE 1:100M

NOTE:
VERIFY ACTUAL DIMENSIONS/MEASUREMENTS




3
A-5 REAR ELEVATION
SCALE 1:100M

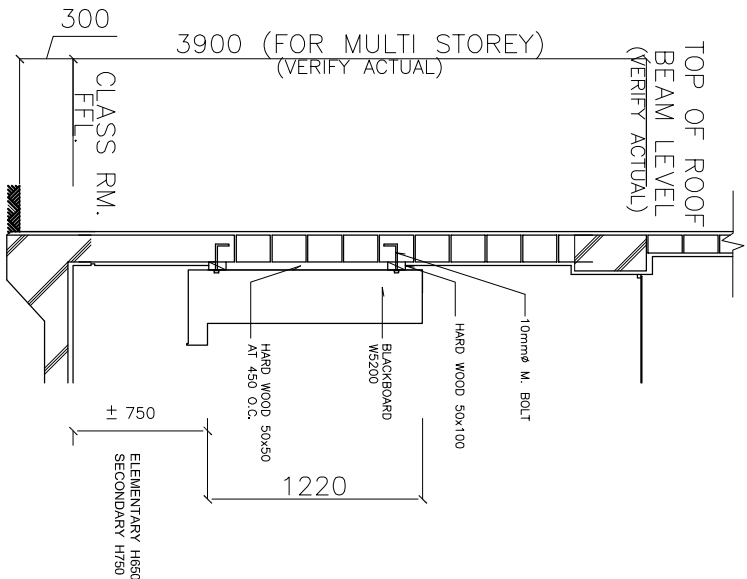


4
A-5

LEFT SIDE ELEVATION

SCALE 1:100M

 <div>REPUBLIC OF THE PHILIPPINES DepEd DEPARTMENT OF EDUCATION EDUCATION FACILITIES DIVISION MIRALDO AVENUE, PASIG CITY</div>	DRAWN BY : <div>JUNELSON P. CULLADO CAD OPERATOR EFD-DepEd</div>	CHECKED BY : <div>NATHANIEL Q. MENDOZA ARCHITECT IV EFD-DepEd</div>	RECOMMENDING APPROVAL : <div>LUIS G. PURSIMA, JR. ASSISTANT CHIEF EFD-DepEd</div>	APPROVED BY : <div>ANNABELLE R. PANGAN CHIEF EFD-DepEd</div>	PROJECT TITLE : <div>DEPED MISAMIS ORIENTAL GENERAL COMPREHENSIVE HS GABALDON</div>	PROJECT CODE: GAB-2STY-8	OWNER : DEPARTMENT OF EDUCATION DepEd	SHEET NO.: A-5
	SHEET CONTENTS : ELEVATIONS		6					



SPECIFICATION:

MATERIALS:

-25x300mm SOLID TANGILE OR EQUIVALENT WOOD FRAMES.

-6mm THK LAWANIT BOARD

PROVIDE:

-70x120x150mm CHALKDUST BOX

-2Øx10x10mm MESHWIRE

FINISH:

-FRAMING AND CHALKBOX PAINT WITH

QUICK DRYING ENAMEL PAINT (BROWN)

-BOARD PAINT WITH BLACKBOARD PAINT

(GREEN) OR BLACKBOARD SLATE

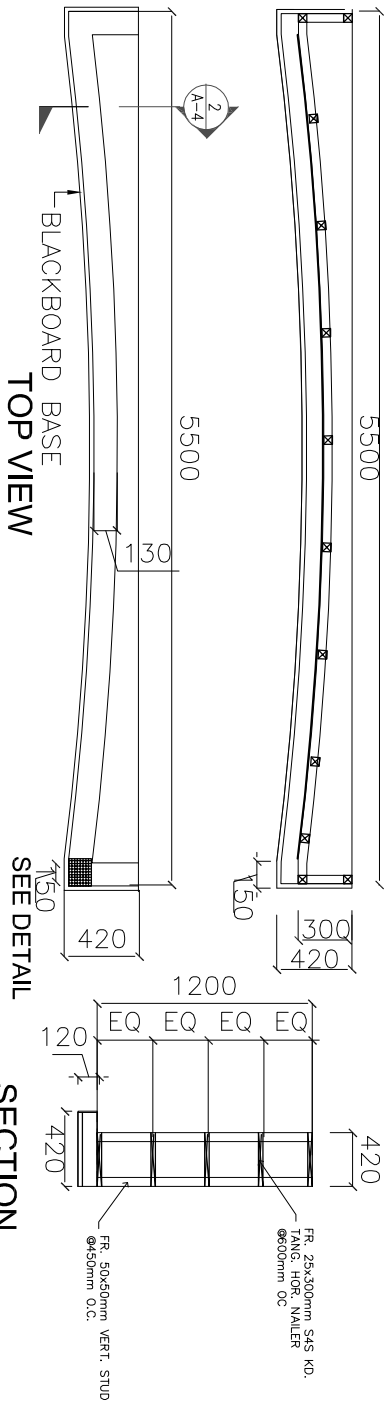
2
A-6
SCALE

CON. SECTION DET.

1:100M

FRONT VIEW

CHALK DUST BOX DETAIL



TOP VIEW

SEE DETAIL

SECTION

1
A-6
SCALE

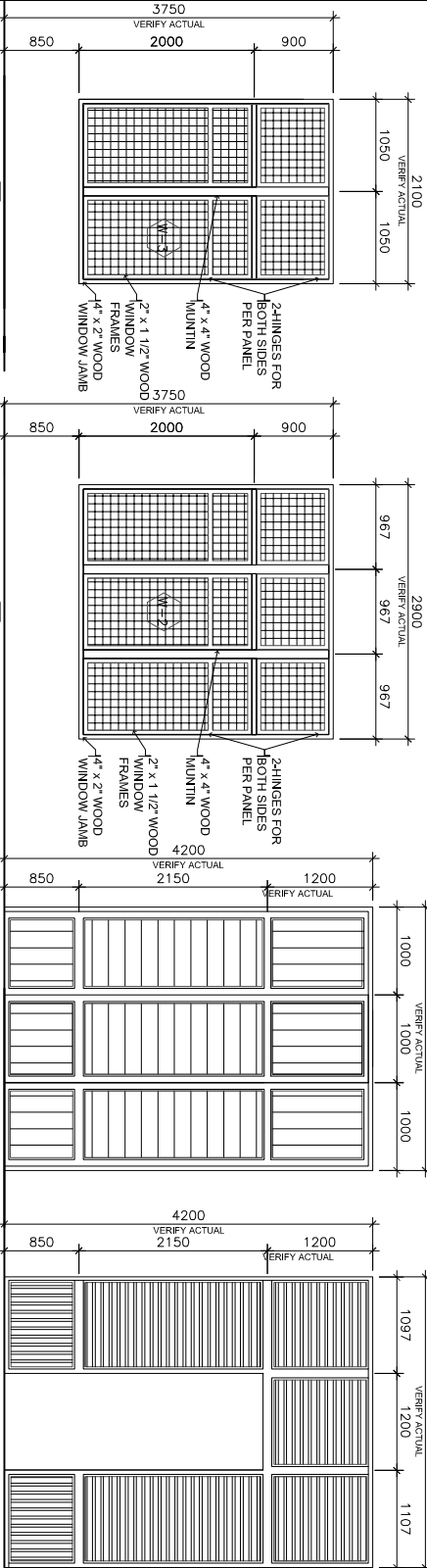
BLACKBOARD DETAIL

1:50M

4
A-6
SCALE

FLOOR FINISHES

NTS



6
A-6
SCALE

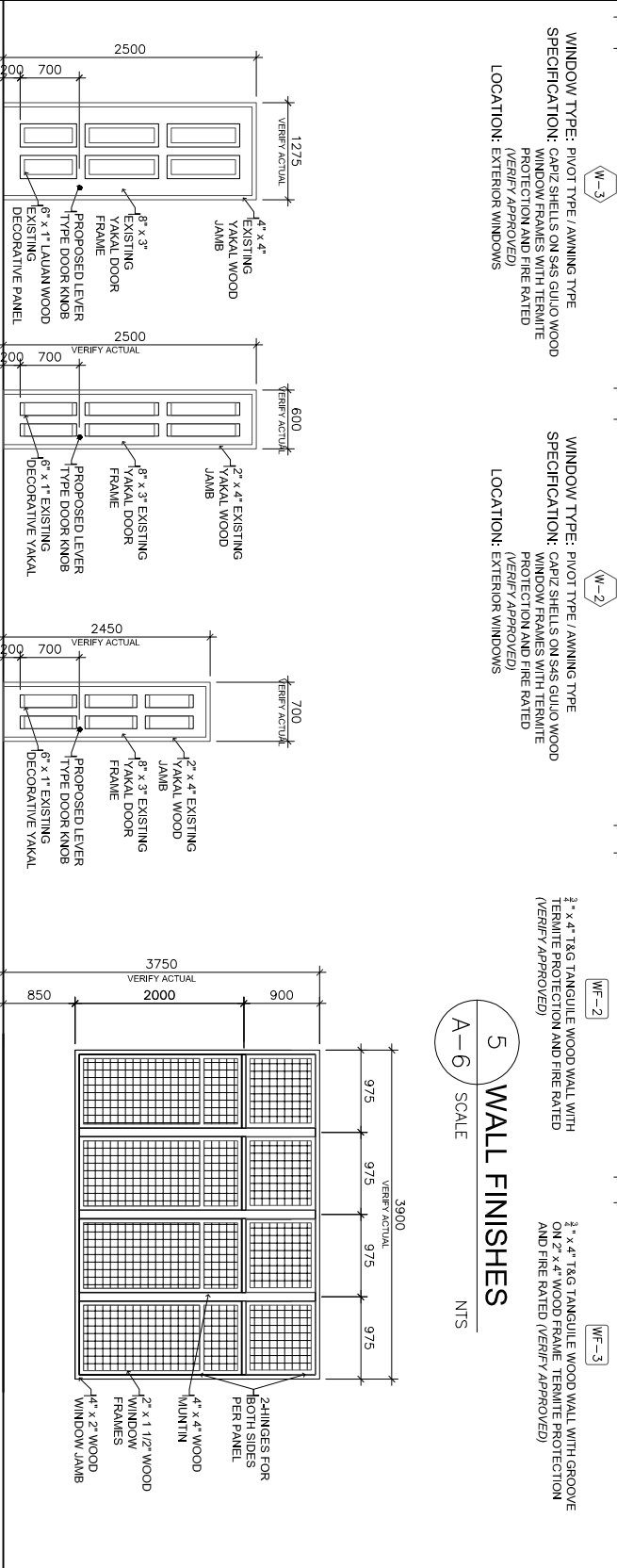
CEILING FINISHES

NTS

5
A-6
SCALE

WALL FINISHES

NTS



3
A-6
SCALE

SCHEDULE OF DOORS AND WINDOWS

1:50M

REPUBLIC OF THE PHILIPPINES

DepEd

DEPARTMENT OF EDUCATION
EDUCATION FACILITIES DIVISION
MIRALCO AVENUE, PASIG CITY

DRAWN BY :

JUNELSON P. CULLADO
CAD OPERATOR
EPD-DepEd

CHECKED BY :

NATHANIEL Q. MENDOZA
ARCHITECT IV
EPD-DepEd

RECOMMENDING APPROVAL :

LUIS G. PURISMA, JR.
ASSISTANT CHIEF
EPD-DepEd

APPROVED BY :

ANNABELLE R. PANGCAN
CHIEF
EPD-DepEd

PROJECT TITLE :

MISAMIS ORIENTAL GENERAL COMPREHENSIVE HS
GABALDON

PROJECT CODE:

GAB-1STY-17

OWNER :

DEPARTMENT OF EDUCATION
DepEd

SHEET NO.:

A-6

SHEET CONTENTS :

FLOOR, WALL, CEILING FINISHES
SCHEDULE OF DOORS AND WINDOWS
BLACKBOARD DETAIL

6