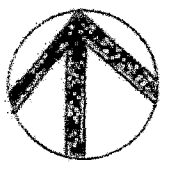


total perimeter = 448.60 / 22.43

NORTH

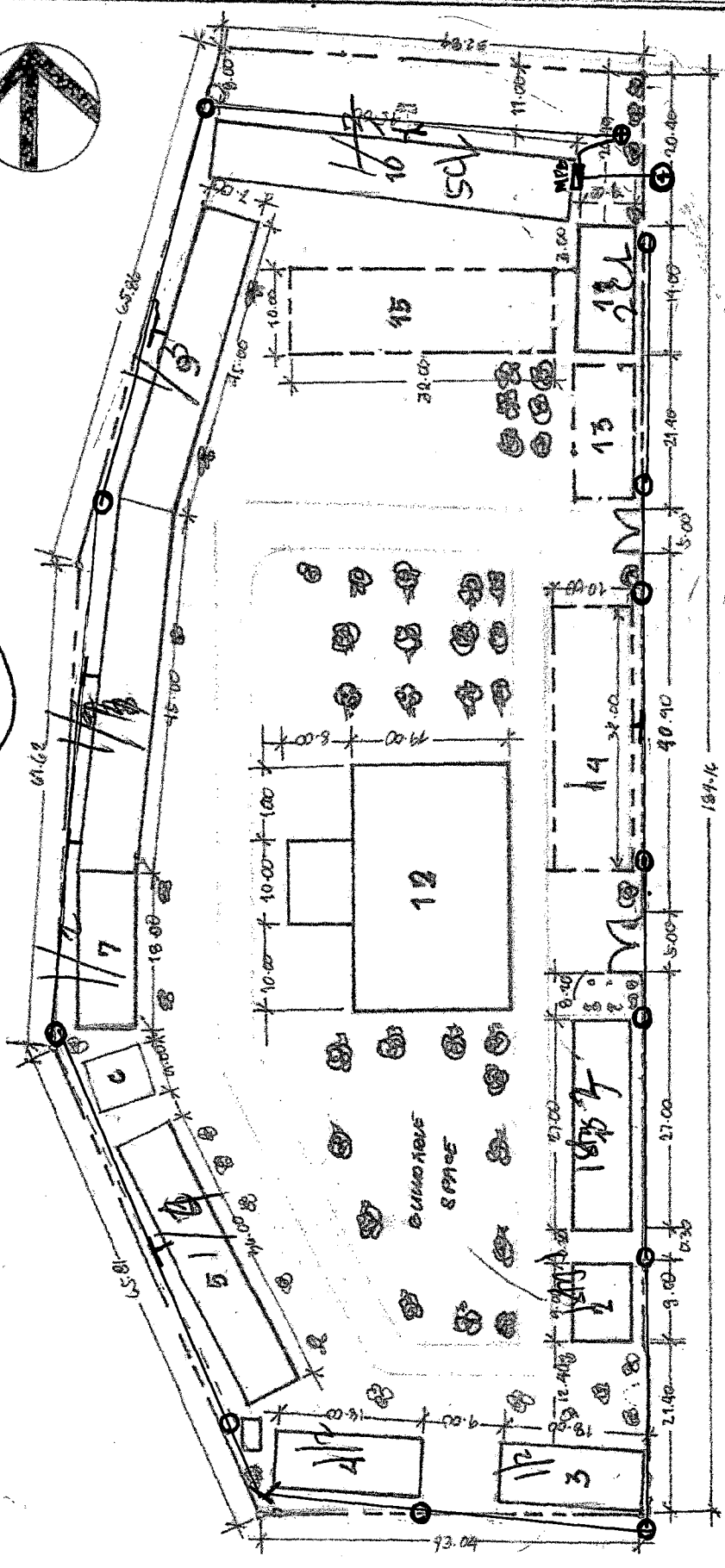


LEGEND:

- 1 - DEP ED STANDARD SCH
- 2 - DEP ED STANDARD SCH. 1
- 3 - DEP ED STANDARD SCHOOL
- 4 - DEP ED STANDARD SCH
- 5 - PROVINCIAL SCHOOL BLDG
- 6 - PROVINCIAL SCHOOL BLDG
- 7 - PROVINCIAL SCHOOL BLDG
- 8 - PROVINCIAL SCHOOL BLDG
- 9 - PROVINCIAL SCHOOL BLDG
- 10 - PROVINCIAL SCHOOL BLDG
- 11 - F.F. B.C.C. II
- 12 - COVERED CORRIDOR
- 13 - PROPOSED 2-CLASSROOM
- 14 - PROPOSED 2-CLASSROOM
- 15 - PROPOSED 2-CLASSROOM

LEGEND:

- MPB - Main Panel Board
- Concrete Pole for Transformer
- Service Line Steel Pole
- Service Line
- Bracket



TO LUGAN CITY
NATIONAL HIGHWAY
TO CAGAYAN DE ORO CITY

SCALE: 1:800 MTS

NAAWAN NHS

DESIGNED BY:	APPROVED BY:	RECOMMENDED BY:	REVIEWED BY:
<div> <div> </div> <div> <p>DESIGNED BY:</p> </div> </div>	<div> <div> </div> <div> <p>APPROVED BY:</p> </div> </div>	<div> <div> </div> <div> <p>RECOMMENDED BY:</p> </div> </div>	<div> <div> </div> <div> <p>REVIEWED BY:</p> </div> </div>
<div> <div> <p>ANAWAN NAT'L HIGH SCHOOL</p> </div> <div> <p>DISTRICT OF LUGAN</p> </div> </div>	<div> <div> <p>WILSON V. SALCEDO</p> </div> <div> <p>SCHOOL PRINCIPAL</p> </div> </div>	<div> <div> <p>JOSEPH L. SINDO</p> </div> <div> <p>DIVISION ENGINEER</p> </div> </div>	<div> <div> <p>CHERRY MAE L. LIMBICO, Ph.D. CESV</p> </div> <div> <p>SCHOOL DIVISION SUPERINTENDENT</p> </div> </div>