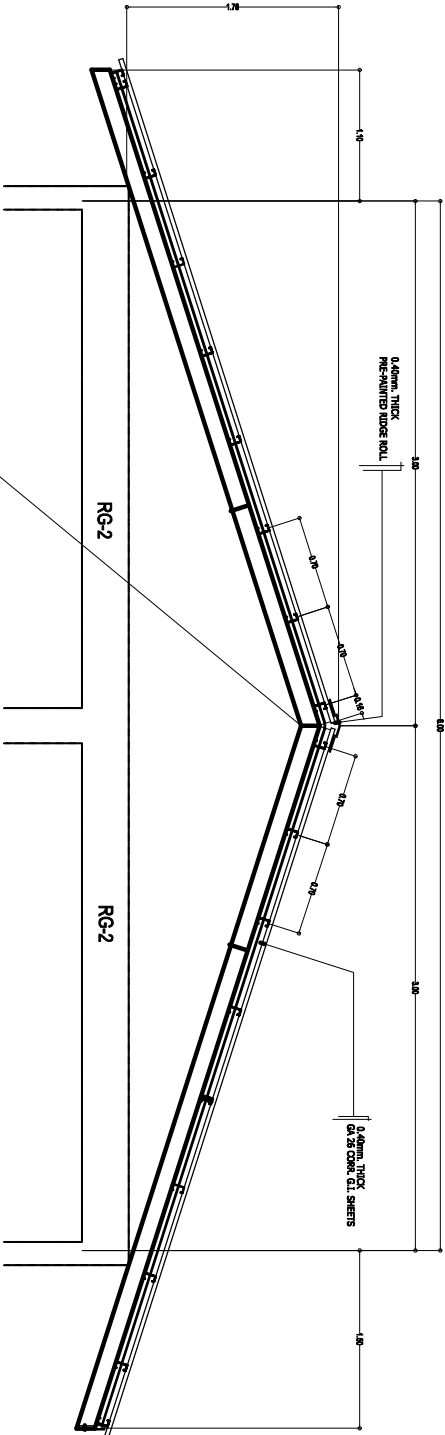
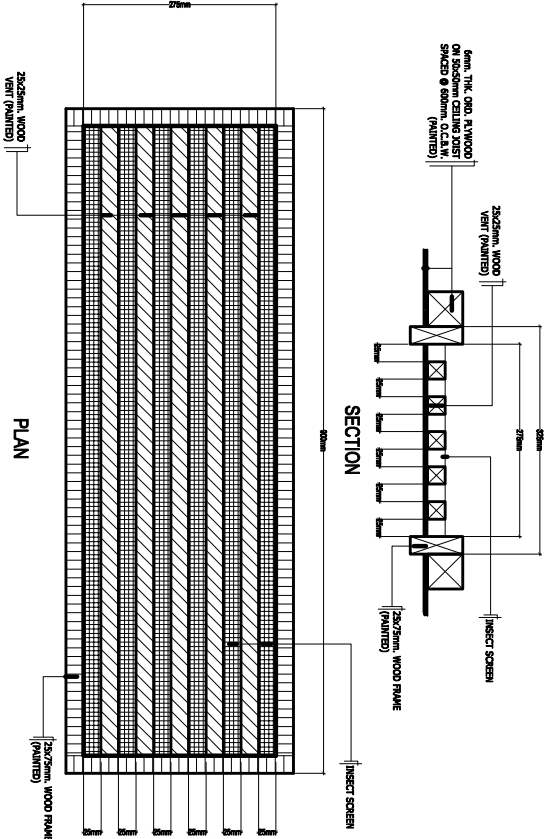
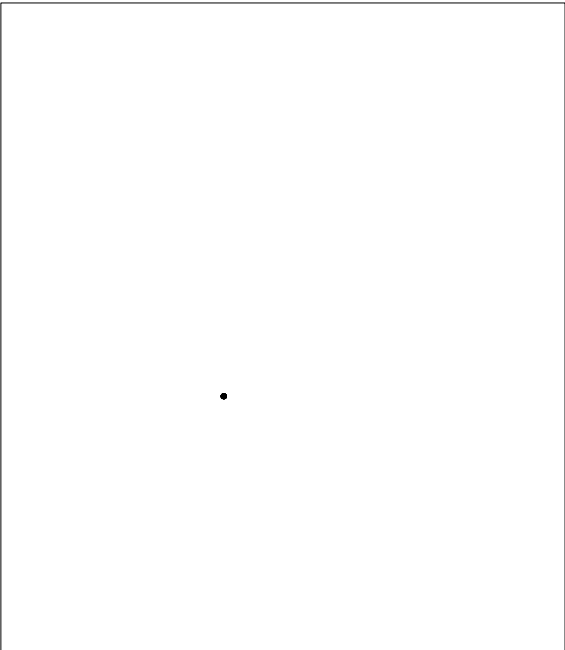


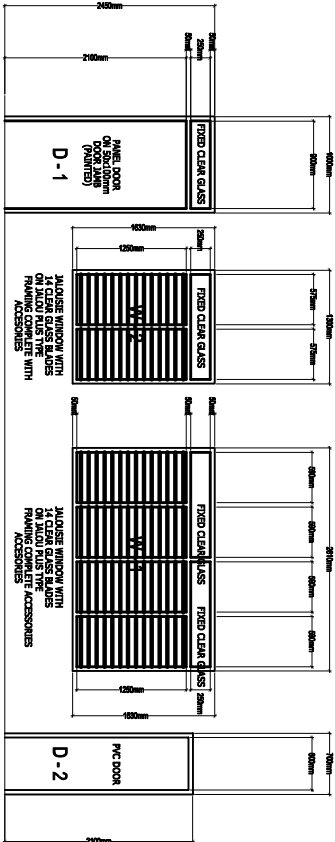
ROOF FRAMING PLAN  
SCALE 1:60 H.



SECTION THRU "E-E"  
DRAWN NOT TO SCALE



CEILING VENT DETAIL  
SCALE 1:30 H.



SCHEDULE OF DOORS AND WINDOWS  
SCALE 1:40 H.

|   |  |  |                                    |  |   |  |                                      |  |              |  |
|---|--|--|------------------------------------|--|---|--|--------------------------------------|--|--------------|--|
| <div><div><div>DEPARTMENT OF EDUCATION</div><div>DIVISION OF MISAMIS ORIENTAL</div><div>Vitez Street, Cagayan de Oro City</div></div><div><div><div>DepEd</div><div>Division Office</div></div></div></div> |  |  | PROJECT TITLE :                    |  | OFFICE OF THE SCHOOLS DIVISION SUPERINTENDENT   |  | SHEET CONTENTS :                     |  | SHEET NUMBER |  |
| REPAIR / REHABILITATION OF<br>ONE STOREY TWO (2) CLASSROOMS(BL. 14)<br>BAGONG LIPUNAN TYPE WITH ATTACHED CR   |  |  | DEPED DIVISION OF MISAMIS ORIENTAL |  | ROOF FRAMING PLAN<br>SECTION THRU "E-E"<br>SECTION DETAIL<br>CEILING VENT DETAIL<br>SCHEDULE OF DOORS AND WINDOWS |  | 02 of 02                             |  |              |  |
| SCHOOL : MANTICAO CENTRAL SCHOOL  |  |  | DIVISION : MISAMIS ORIENTAL        |  | PREPARED BY:  |  | RECOMMENDING APPROVAL:               |  |              |  |
| ADDRESS : MANTICAO, MISAMIS ORIENTAL  |  |  | Division Engineer III              |  | ENGR. SANDY L. SIMO , CE  |  | RUDY O. MAGDUGO                      |  |              |  |
|   |  |  |                                    |  | Chief, SDOO   |  | CHERRY MAE L. LIMBAGO, Ph.D., CESO V |  |              |  |
|   |  |  |                                    |  | SCHOOLS DIVISION SUPERINTENDENT   |  |                                      |  |              |  |